

[Here is how to use RoboBuilder Bluetooth chip with Computer built-in Bluetooth for your reference.](#)



1) Configure Bluetooth module to "MODE 3"

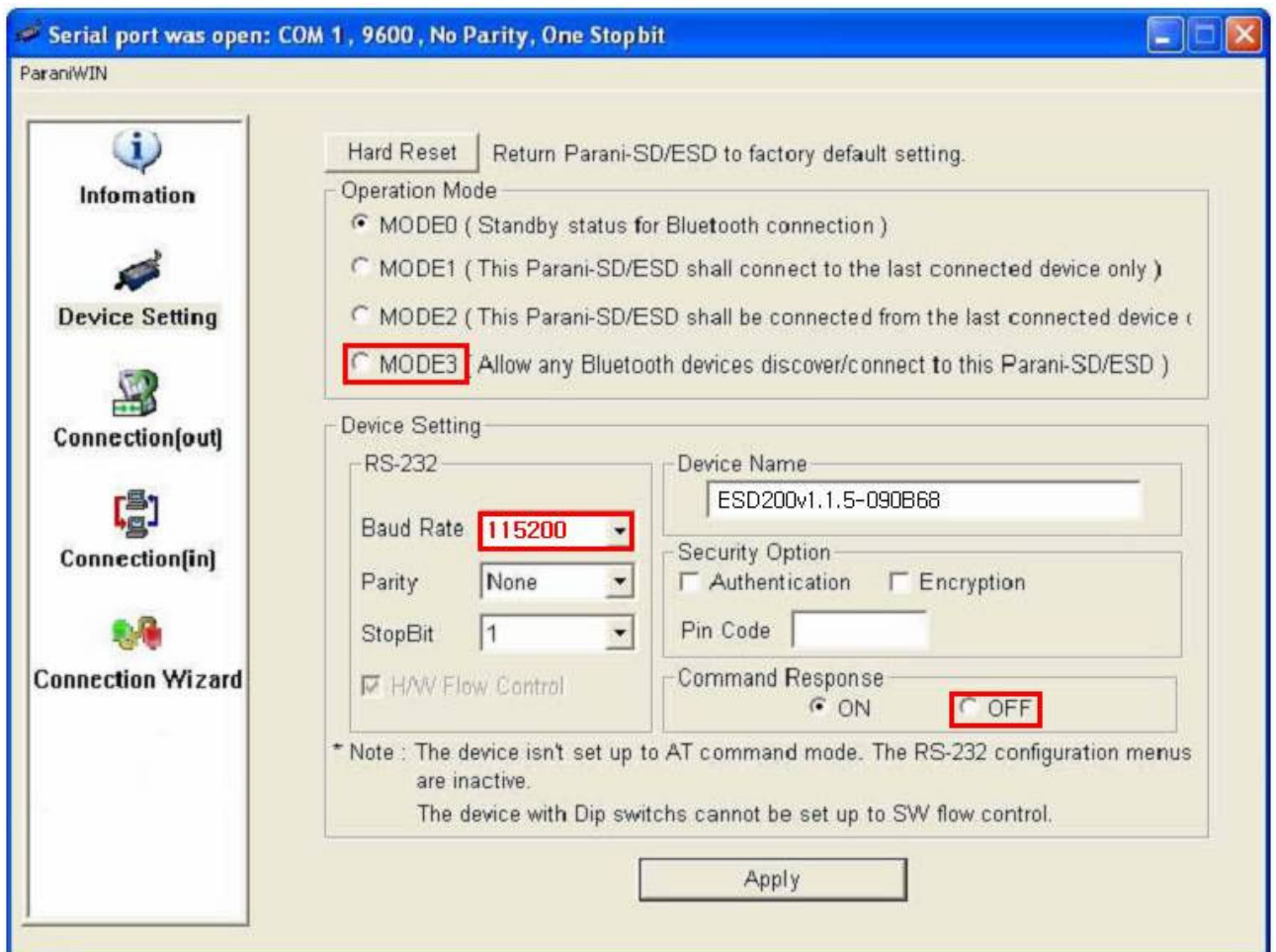
User Manual

Link) http://www.sena.com/download/manual/manual_parani_esd-v1.1.4.pdf

Configuration Software

Link) http://www.sena.com/download/software/setup_esd_conf-v2.0.1.exe

Configuration Value for RoboBuilder



2) Run Bluetooth manager software on Computer (ex. Bluesoleil, Toshiba stack, Widcomm stack, ... etc.)

3) Search Bluetooth device.

4) If found correctly, connect with SPP device.

5) If Pin Code is demanded, input '1234'

6) Done.